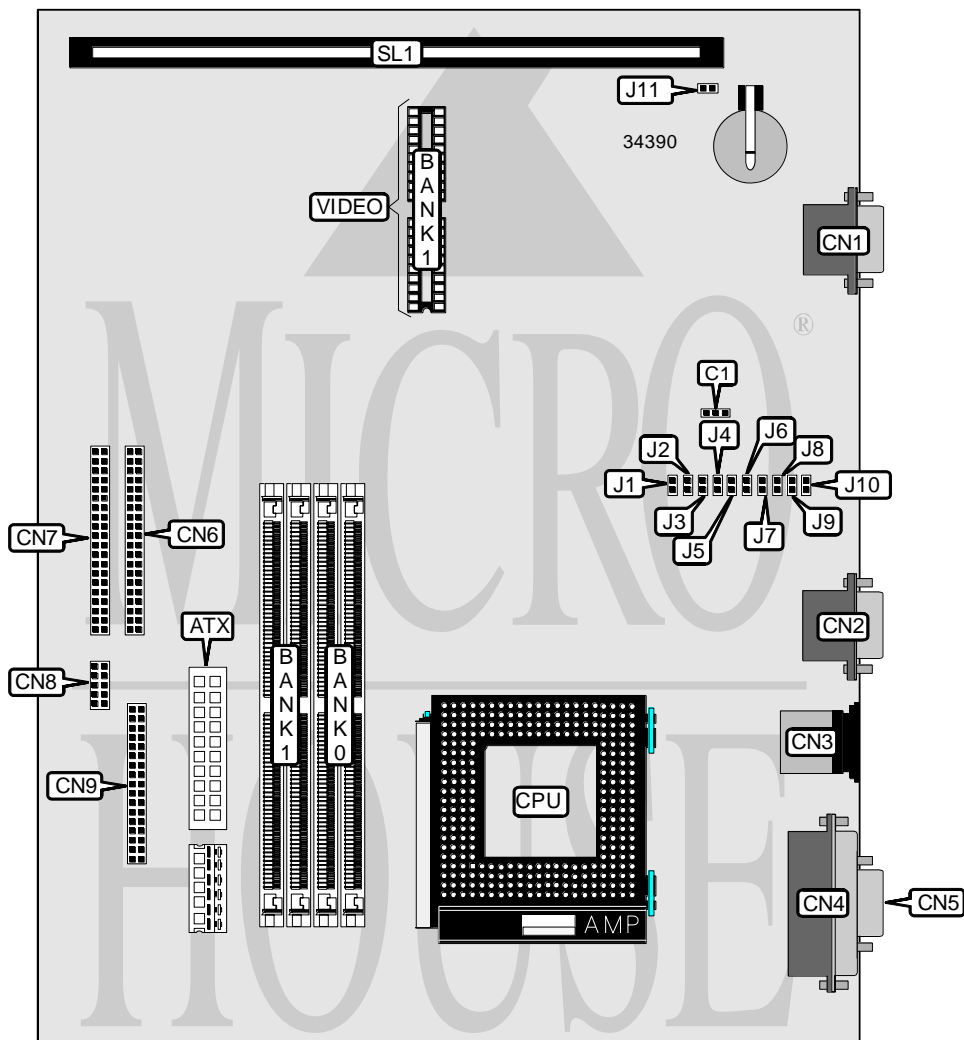


# DELL COMPUTER CORPORATION OPTIPLEX GS

<b>Processor</b>	Pentium
<b>Processor Speed</b>	133/166/200MHz
<b>Chip Set</b>	Intel
<b>Video Chip Set</b>	S3
<b>Maximum Onboard Memory</b>	128MB (EDO supported)
<b>Maximum Video Memory</b>	2MB
<b>Cache</b>	256KB
<b>BIOS</b>	Unidentified
<b>Dimensions</b>	305mm x 244mm
<b>I/O Options</b>	Floppy drive interface, IDE interfaces (2), parallel port, PS/2 mouse port, serial ports (2), VGA port, riser slot, ATX power connector
<b>NPU Options</b>	None



*Continued on next page. . .*

# DELL COMPUTER CORPORATION

## OPTIPLEX GS

... continued from previous page

CONNECTIONS			
Purpose	Location	Purpose	Location
ATX power connector	ATX	IDE interface 1	CN6
VGA port	CN1	IDE interface 2	CN7
Serial port 2	CN2	Front panel connector	CN8
PS/2 mouse port	CN3	Floppy drive interface	CN9
Parallel port	CN4	Riser slot	SL1
Serial port 1	CN5		

USER CONFIGURABLE SETTINGS		
Function	Label	Position
í Factory configured - do not alter	C1	Open
í Factory configured - do not alter	J1	Open
Password enabled	J2	Closed
Password disabled	J2	Open
í Factory configured - do not alter	J6	Open
í Factory configured - do not alter	J7	Open
í Factory configured - do not alter	J8	Open
í Factory configured - do not alter	J9	Unidentified
í Factory configured - do not alter	J10	Unidentified
NIC setting normal operation	J11	Open
NIC setting clear	J11	Closed

DRAM CONFIGURATION		
Size	Bank 0	Bank 1
8MB	(2) 1M x 32	None
16MB	(2) 2M x 32	None
16MB	(2) 1M x 32	(2) 1M x 32
24MB	(2) 2M x 32	(2) 1M x 32
32MB	(2) 4M x 32	None
32MB	(2) 2M x 32	(2) 2M x 32
40MB	(2) 4M x 32	(2) 1M x 32
48MB	(2) 4M x 32	(2) 2M x 32
64MB	(2) 8M x 32	None
64MB	(2) 4M x 32	(2) 4M x 32
72MB	(2) 8M x 32	(2) 1M x 32
80MB	(2) 8M x 32	(2) 2M x 32
96MB	(2) 8M x 32	(2) 4M x 32
128MB	(2) 8M x 32	(2) 8M x 32

Note: Board accepts EDO memory.

CACHE CONFIGURATION
Note: The location of the cache is unidentified.

Continued on next page...

DELL COMPUTER CORPORATION  
OPTIPLEX GS

... continued from previous page

VIDEO MEMORY CONFIGURATION		
Size	Bank 0	Bank 1
1MB	1MB	None
2MB	1MB	(2) 256K x 8
Note: Bank 0 is factory installed and is not configurable. The location is unidentified.		

CPU SPEED SELECTION					
CPU speed	Clock speed	Multiplier	J3	J4	J5
133MHz	66MHz	2x	Open	Open	Closed
166MHz	66MHz	2.5x	Open	Closed	Open
200MHz	66MHz	3x	Closed	Open	Open